

**39<sup>th</sup> Annual George C. O'Connell Fall Bay - Sept. 21-22, 2019**

**Sponsored By North Cape Yacht Club,**

**The North Shore Pontoon Center,**

**and the O'Connell Family Foundation**



**SAILING INSTRUCTIONS:**

**1. RULES**

This Regatta is organized by North Cape Yacht Club and races are governed by the rules as defined by the Racing Rules of Sailing 2017-2020 (RRS), applicable One Design Class Rules and/or Lake Erie PHRF, except as altered by these Sailing Instructions.

- 1.1 All yachts must be prepared to stand Race Committee inspection. PHRF-LE Rules will govern PHRF yachts classes.
- 1.2 Yachts will conform to US Sailing Rules Part 1 – Fundamental Rules. There will be a minimum of three (3) persons aboard each yacht racing.

**2. NOTICES TO COMPETITORS**

Notices to competitors will be posted on the street-side windows of Race Headquarters (the Boat House).

**3. CHANGES TO SAILING INSTRUCTIONS**

Any change to the sailing instructions will be posted on the official notice location not later than one hour before the affected race.

**4. POSTPONEMENT**

Signals made ashore will be flown from the flagpole at the end of the Jet Express dock. Code flag “Answering Pennant” (AP) with 2 sound signals means, “The race is postponed; don’t leave the harbor.” The AP flag will be lowered with one (1) sound signal, one hour prior to the warning sound signal for the first start.

- 4.1 On water postponement: Code Flag “AP” and two (2) sound signals. The Warning Signal will be made one (1) minute after lowering the answering pennant.

**5. SCHEDULE OF RACES**

- 5.1 There will be no competitors’ meeting.
- 5.2 Up to three (3) races will be sailed, Saturday and Sunday.
- 5.3 The scheduled time for the first warning signal is at 10:25am on Saturday; 9:25am on Sunday. The starting sequence for the second race will be at the discretion of the Race Committee.

**6. CLASS FLAGS**

The color of the Class ID Flags and **tentative** starting order are as follows; **final starting order will be determined by the Race Committee.**

Class Flag	Color
MULTIHULL	Lt. Blue
PHRF A	Pink
PHRF B	Purple
HOBIE 33	Black
TARTAN 10	Yellow
JAM A & B	Gray

**7. RACING AREA**

The racing area will be the South Bass Island area in western Lake Erie.

**8. THE START**

Races will be started in accordance with RRS 26 with the warning signal given five (5) minutes before the starting signal. The starting line will be between the orange starting pennant on the R/C boat and the starting mark,

located approximately in the general vicinity of the PIB red nun buoy. The R/C boat may trail a protection mark which is an extension of that vessel and part of the starting line. Boats whose warning signal has not been made shall avoid the starting area.

## 9. **COURSE(S) – also see attached chart**

Course will be indicated by either numbered flags or numbered boards by the Race Committee. Race Committee will display course number and direction flags (red if to port, green if to starboard) as follows:

- 9.1 If the wind direction permits, a starting line reasonably squared to the first mark of a described course, the RC Boat will display one (1) course direction flag for the ENTIRE COURSE.
- 9.2 If the wind direction does NOT permit above, an R/C Mark Boat may set an inflatable tetrahedron approximately 1 mile to windward of the starting line. In this case, the R/C Boat will display two (2) flags, the upper of which indicates the rounding direction of the set mark, and the lower of which indicates the rounding direction of the remaining mark(s).
- 9.3 Marks are NOT listed in rounding order.
- 9.4 For scoring purposes, all course lengths are determined by the RC.
- 9.5 Course #4 only: Should course change be warranted due to wind direction/velocity change, the new weather mark shall be a yellow tetrahedron.

### **COURSE #1 – ALL CLASSES**

Marks are Rattlesnake Island and Green Island

### **COURSE #2 ALL CLASSES (except JAM)**

Marks are Buoy RN-2 off North Bass Island, and Bell Buoy G-1 off Middle Bass Island

### **COURSE #2 – JAM**

Marks are Sugar Island and Bell Buoy G-1 off Middle Bass Island

### **COURSE #3 – ALL CLASSES**

Marks are Sugar Island and Bell Buoy G-1 off Middle Bass Island

### **COURSE #4 – ALL CLASSES (WINDWARD – LEEWARD)**

Marks of the course are temporary inflatable marks.

## 10. **THE FINISH**

The finish line will be between an orange flag on the R/C boat and the finish mark unless shortened or abandoned (see RRS 32).

## 11. **MARKS**

Marks of the course may be: Islands: Green, Rattlesnake, and Sugar; Buoys: North Bass RN2, Middle Bass G-1, or temporary marks for Windward-Leeward courses.

## 12. **RECALLS**

- 12.1 Individual Recall: The R/C boat will raise code flag “X” and signal in accordance with Rule 29.1, and MAY attempt to notify the individual yacht(s) by hail and/or VHF-71. However, the failure of a yacht to hear her recall shall not relieve her of her obligation to start correctly.
- 12.2 General Recall: If a general recall is necessary, it will be signaled by the R/C boat in accordance with Rule 29.2 and raise code flag “First Substitute” (blue/yellow pennant) accompanied by 2 sound signals, and MAY attempt to notify the fleet by hail and/or VHF-71. However, the failure of any yachts to hear the recall shall not relieve them of their obligation to start correctly. The fleet that compelled the recall will go into sequence after the last class has started, as signaled by display of their class flag.

## 13. **TIME LIMIT**

- 13.1 Island Courses: The time limit for the first yacht to finish is three (3) hours. Yachts failing to finish within 60 minutes after the first boat in their class finishes will be scored DNF (did not finish). This alters RRS Rule 35, and RRS Appendix A4.
- 13.2 Windward-Leeward Courses: The time limit for the first yacht to finish is one (1) hour. Yachts failing to finish within 30 minutes after the first boat in their class finishes will be scored DNF (did not finish). This alters RRS Rule 35, and RRS Appendix A4.

**14. PROTESTS AND REQUESTS FOR REDRESS**

Protest flags must be flown. The protesting yacht must also notify the R/C boat as soon as possible after finishing of her intent to protest, and the sail number of the protested yacht. A boat that has taken a penalty under RRS 31.2 or 44.1 shall notify the Race Committee after it has finished the race.

- 14.1 Protest forms are available at Race Headquarters or from the Race Committee. Protest shall be delivered to the Race Committee within 1.0 hour after the Race Committee or finish boat docks.
- 14.2 Hearings will be held as soon as possible after racing at Race Headquarters. Hearing will proceed in the approximate order of receipt, beginning at the time posted on the Official Notice location.

**15. SCORING**

The Low Point System of Appendix A of the RRS will apply. Ties will be broken in accordance with RRS A.8 Series Tie.

**16. SAFETY**

All yachts entering or racing shall be subject to the direction and control of the Race Committee. However, each competitor is responsible for the personal safety of him/herself, his/her crew, and yacht. It shall be the sole and inescapable responsibility of the skipper and crew of the yacht to decide whether to start, continue or finish a race.

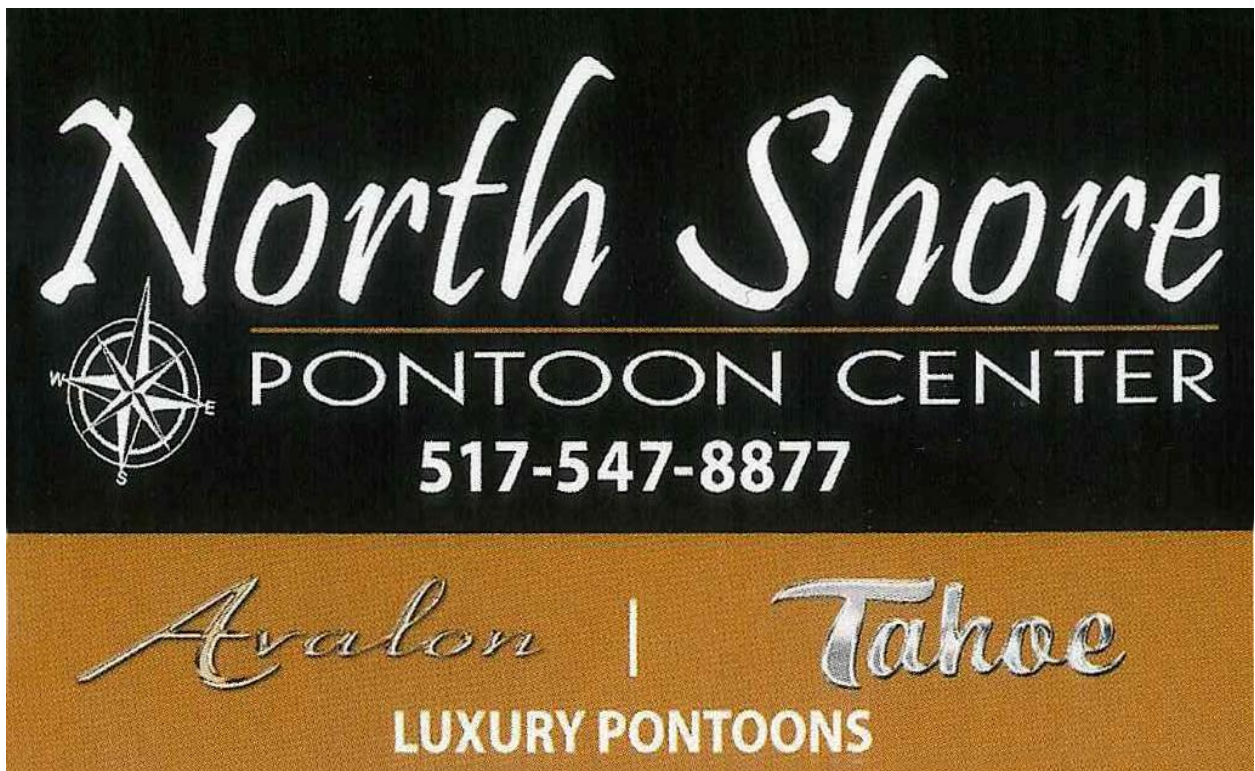
- 16.1 Retirement: a yacht that retires shall notify the Race Committee via VHF Channel 71, before leaving the racing area.

**17. RADIO COMMUNICATION**

A boat shall neither make nor receive radio transmissions not available to all boats while racing. This restriction also applies to mobile phones. The R/C may broadcast information pertinent to competitors using VHF Channel 71, but calls to the R/C should not be initiated by competitors, except to retire.

**18. TROPHIES AND PRIZES**

Flags will be awarded to the top three finishers of each class of three or more boats. Class trophies will be awarded to the top finisher of PHRF A, PHRF B and JAM A, JAM B. The George C. O'Connell perpetual trophy will be awarded to the top finisher in the largest division.



**Course #4 – all classes  
Windward Leeward**

**Course #2 JAM is same  
as Course #3 PHRF**

